



Manufacturing Maturity & Recovery Index (MRI) : A Pulse™ Diagnostic

PREPARED FOR: Apex Industrial Systems

INDUSTRY: Manufacturing

ANALYSIS PERIOD: FY 2025 – Q1 2026

DIAGNOSTIC DATE: April 10, 2026

This diagnostic is a read-only, non-invasive observation conducted within a **secure 'Clean Room' environment**. All data is **AES-256 encrypted and anonymized**. We require zero write-access to core ERP systems, ensuring 100% operational safety.

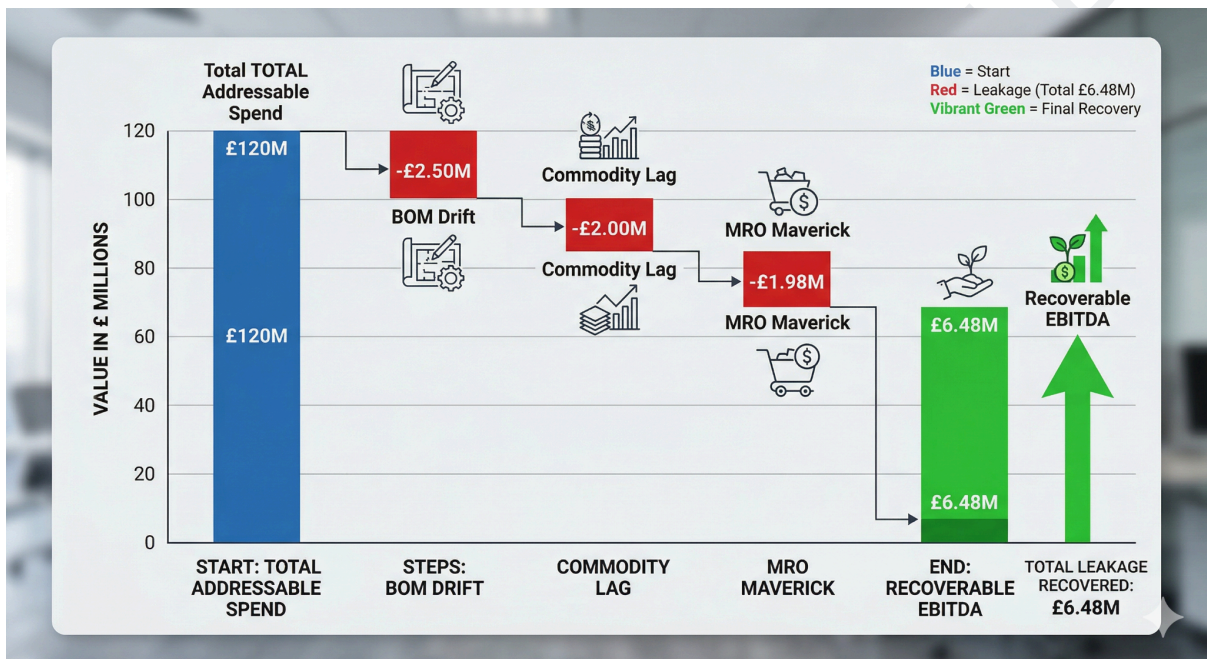
CONFIDENTIALITY NOTICE: This document contains proprietary financial diagnostics generated by the Procumen. Data is encrypted and anonymized.

PROCUMEN : Commercial Wisdom. Digital Orchestration.

EXECUTIVE SUMMARY

The Manufacturing Waterfall

The **Pulse™** diagnostic engine analyzed **£120M** of addressable manufacturing spend to identify a **Value Gap of 5.4%**, representing **£6.48M** in recoverable EBITDA. This leakage is a direct result of an **Execution Gap**—the failure of legacy "Systems of Record" to enforce complex contract logic at the point of every transaction.



The Diagnostic Verdict

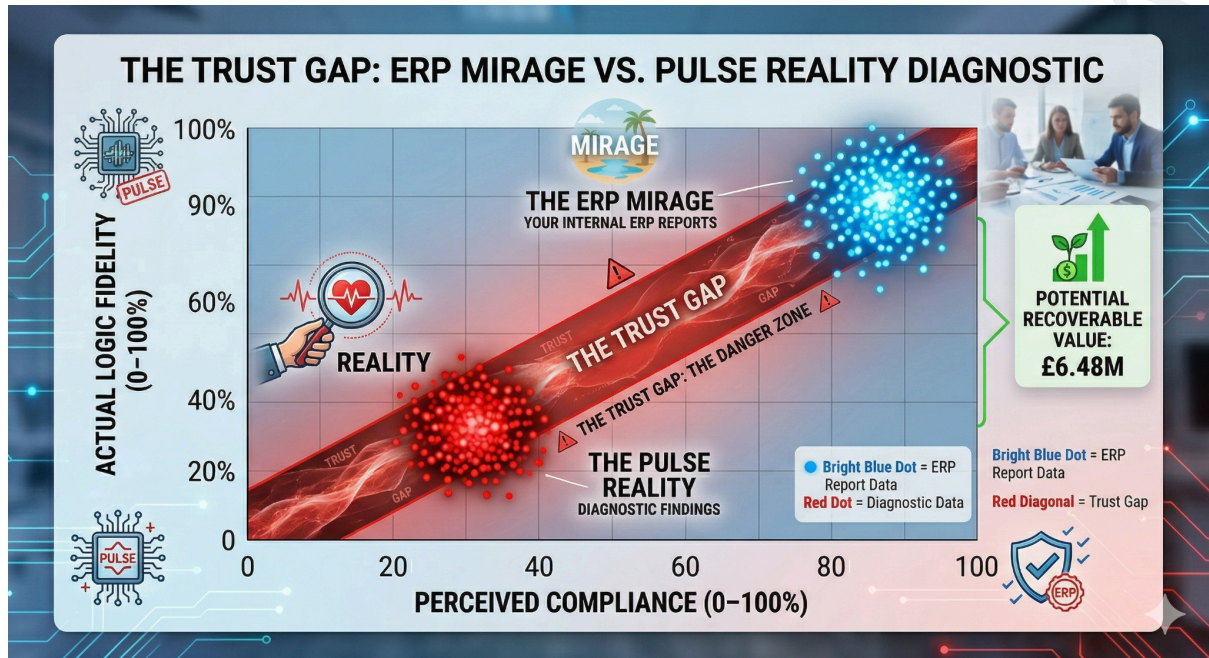
Apex Industrial Systems suffers from a high-fidelity **Execution Gap**. Your "Systems of Record" (ERP) cannot enforce the Strategic Intent of your contracts at the point of transaction.

Key Metrics:

- Addressable Spend Analyzed: £120M.
- Identified Value Gap: £6.48M (5.4%).

The Perception Gap

Standard Cost Calibration:



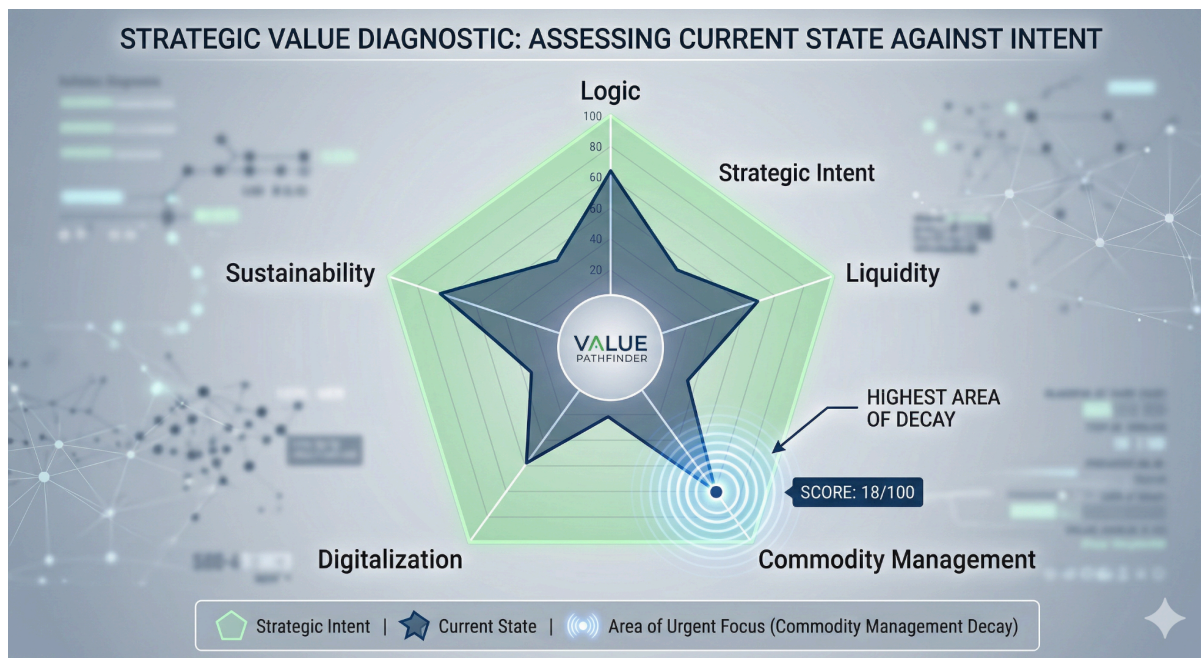
The Findings: We contrasted your reported KPIs against our **Pulse™ Reality Scan**:

- **BOM Fidelity:** Reported 95% vs. Actual 62% logic compliance.
- **Standard-to-Actual Variance:** Reported <1% vs. Actual 4.8% drift.

Pulse Reasoning: Your ERP reports "Success" based on simple three-way matches. Pulse™ identifies that a **4.8% in standard-to-actual variance** is being masked by manual overrides and static pricing, leading to a significant perception gap in your BOM fidelity.

Pulse™ Survey Results

Qualitative MRI: Organizational Maturity Signals



The Diagnostic Findings: The Pulse™ scan evaluated over 150 logic dimensions across your organizational structure to benchmark your **Logic Maturity** at **28/100**. This score indicates a systemic failure of your current infrastructure to "reason" with the complex constraints of your supply chain.

- **Commodity Management (18/100):** This is the highest area of decay. There is a complete absence of automated pass-through logic for index-linked raw materials (Aluminum, Polymers), meaning market price drops are never captured.
- **Digitalization (22/100):** Your Master Service Agreements (MSAs) are effectively "Dark Data." Because they exist only as static documents, they are invisible to your transactional ERP, causing a 90% fidelity loss during purchase.
- **Logic (15/100):** High reliance on manual standard-cost overrides during production shortages has normalized "Price Drift," leading to unmonitored EBITDA erosion.

Transition Bridge : While the Pulse™ engine evaluated **150+** logic dimensions, the following three deep dives represent illustrative focus areas prioritized for this specific diagnostic.

- BOM Drift (Standard Cost Erosion)
- Commodity Indexing (Softening Lag)
- MRO & Indirect (Maverick Leakage)

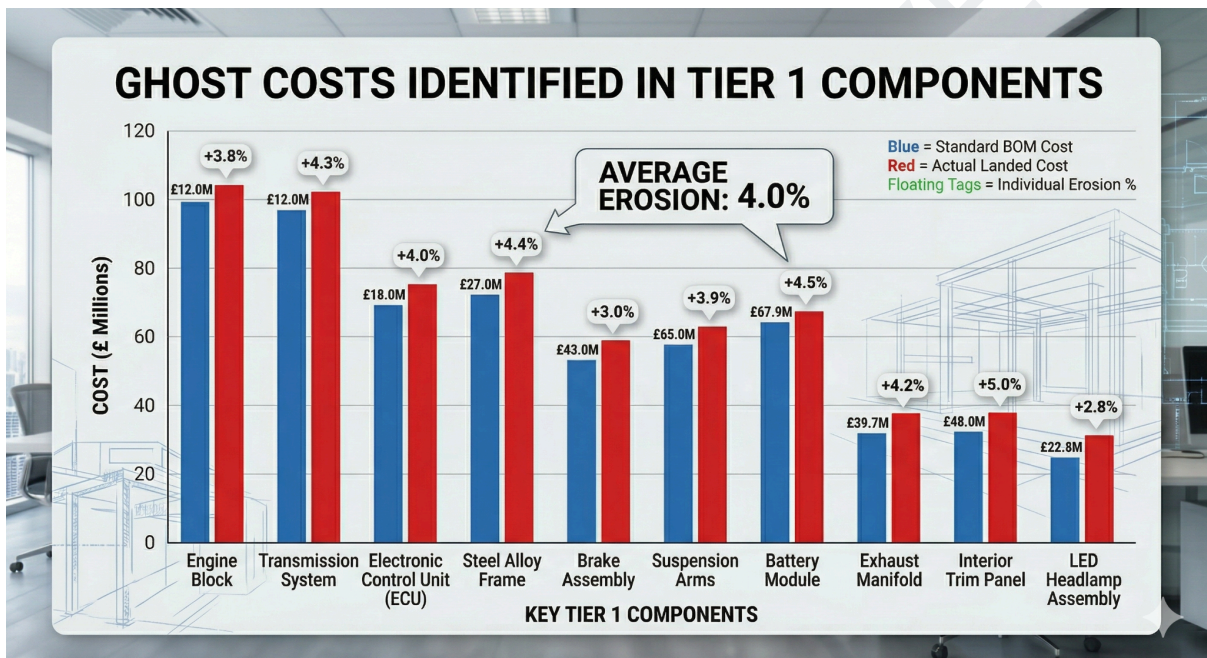
The following sections provide detailed analysis of these illustrative deep dives.

Deep Dive 01 – BoM to Actual Drift

Diagnostic Finding: Systemic BOM-to-Actual Drift

Annual Component Spend: £45.0M | Identified Leakage: £1,800,000 (4.0%)

The Core Finding: Pulse™ identified that 8% of Tier 1 components carry "temporary" surcharges (logistics/energy) that become permanent in your ERP. Because the system cannot reason with the expiration dates of these surcharges, your **standard costs have drifted 4.0% above the negotiated intent**.



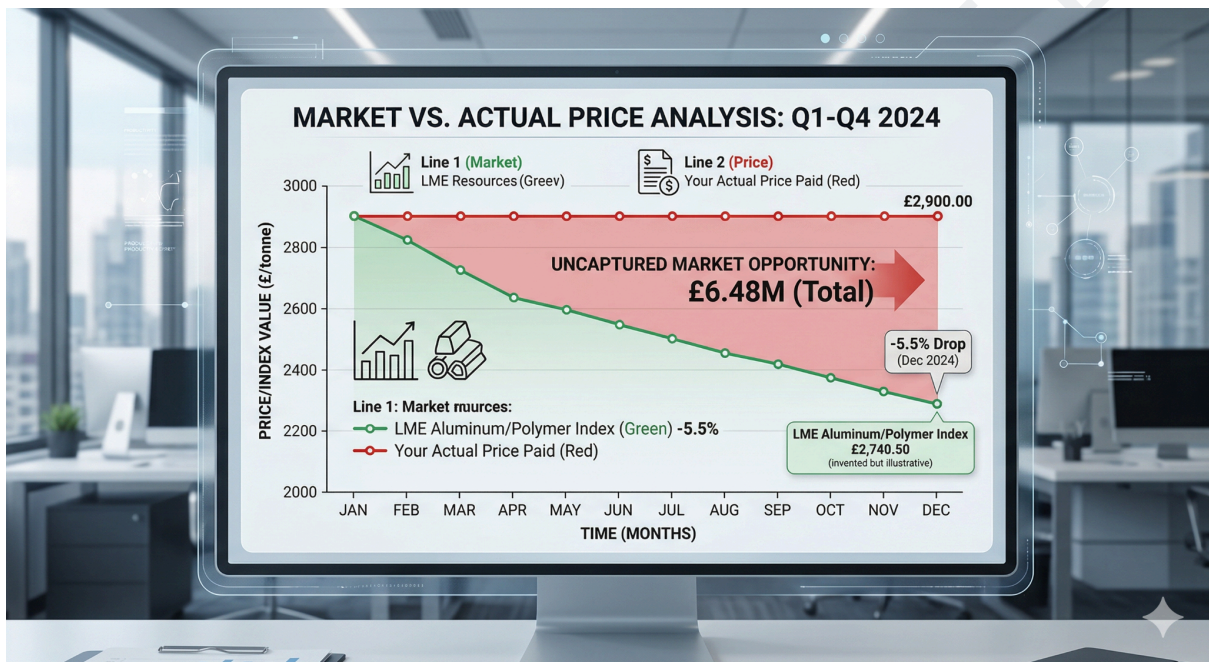
The Execution Gap: Your system lacks the **Decision Cortex** required to reconcile component-level "Standard Cost" with dynamic landed cost variables. It sees a "valid" invoice from a preferred supplier and pays it by default, normalizing margin erosion.

Deep Dive 02 – Commodity Indexing

Annual Spend: £38.5M | Identified Leakage: £1,460,000.

The Core Finding:

74% of raw material purchases failed to reflect market softening. Your ERP stores a **static price**, meaning you are paying "Peak Market" rates despite a 5.5% drop in the underlying index. Pulse™ identifies this lag in real-time, reconciling the PAF (Price Adjustment Formula) against every invoice.



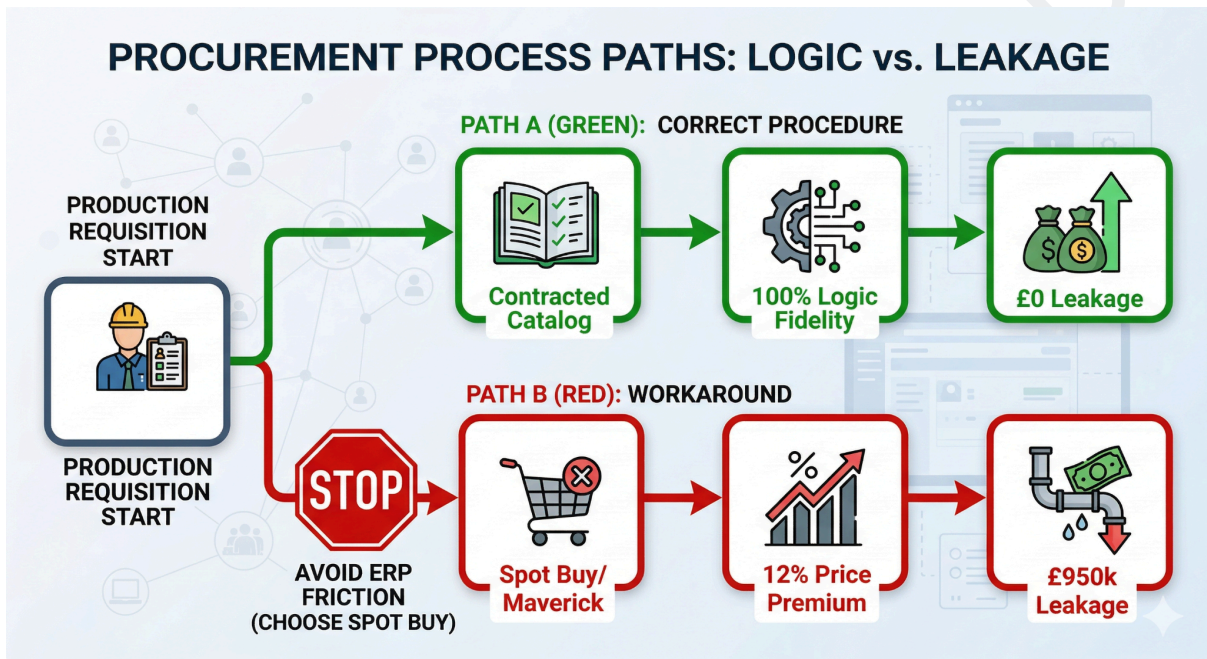
Deep Dive 03 – MRO & Indirect

Diagnostic Finding: Maverick Leakage

Annual Spend: £15.0M | Identified Leakage: £950,000.

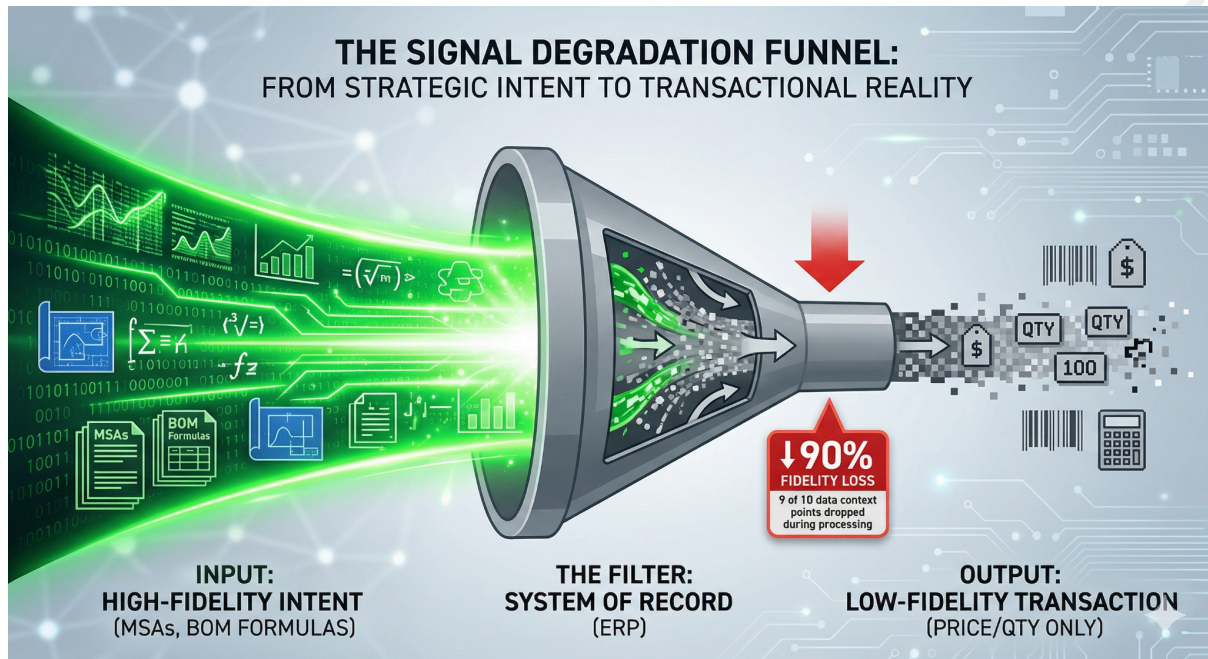
The Core Finding:

Production leads prioritize "speed-to-line" over "fidelity-to-contract," sourcing 18% of indirect spend via spot rates. Pulse™ identifies this as a Strategic Pathway Failure—your system records the buy but fails to guide the user to the optimal source.



The Reasoning Deficit

Why Your Current Systems Are Built to Fail You



The Infrastructure Paradox: ERPs are designed to record, not to reason. They are high-functioning **Systems of Record** built to look backward and log what happened for accounting purposes. However, they are fundamentally incapable of looking forward or reasoning with the 500+ variables, temporal constraints, and index-linked formulas contained in your Manufacturing MSAs.

The Creation of the Logic Vacuum: When your complex strategic intent is compressed into a standard ERP "Price" field, a **Reasoning Deficit** is created. This creates a "Logic Vacuum"—a blind spot in your infrastructure where your EBITDA disappears because your system cannot "see" the rules it is supposed to enforce.

The Procumen Solution: To recover your margin, you must transition from a system that simply records transactions to one that **reasons** with them. The **Pulse™** engine does not merely store your contracts; it compiles them into active logic that protects your margin at the point of purchase.

Pulse™: The Synthetic Reasoning Engine

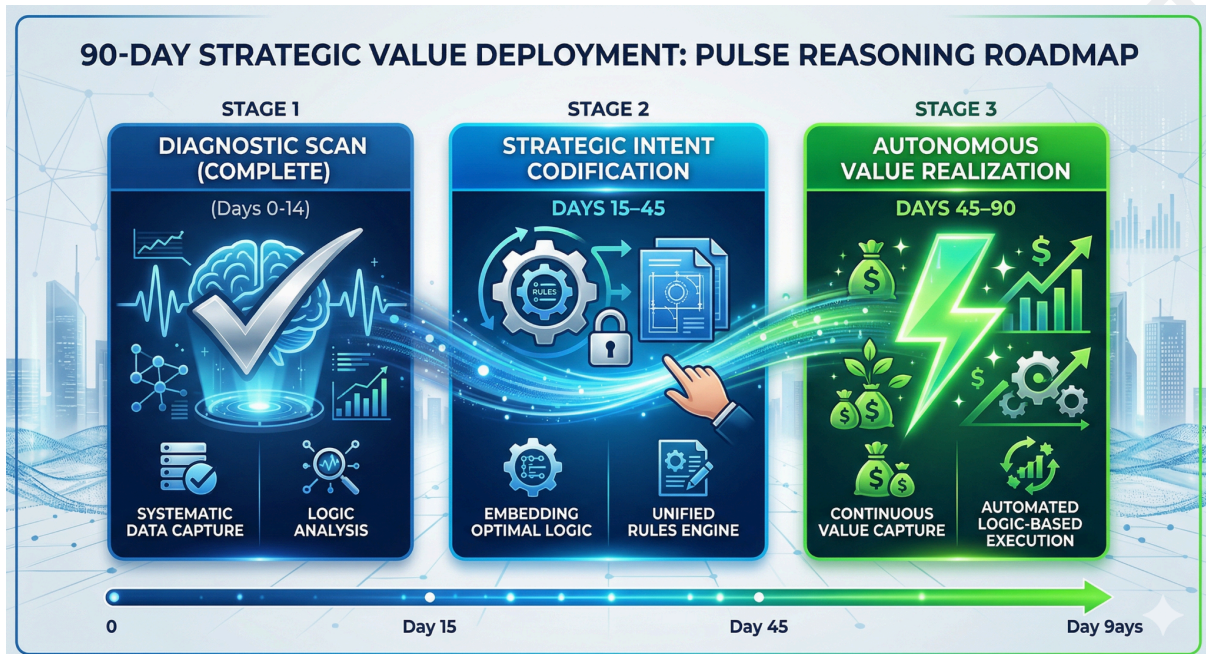
Pulse™ performs **Synthetic Reconciliation**. By synthesizing 60,000+ data points—including index-linked price adjustments and framework PDFs—the Reasoning Node reconstructs the "lost signals" of your supply chain.



This is a level of diagnostic depth physically impossible for manual audits or static reporting.

The Advisory Roadmap

Your Roadmap to Strategic Value Realization



- Identifying your **£6.48M Value Gap** was Phase 1. The next phase of the Procumen Advisory assignment is to bridge this gap through **Intent Codification**—transforming your static contracts into an active, reasoning-led "Buying Pathway" that ensures you never lose this margin again.

Ready to Close the Execution Gap? Contact the Procumen Advisory Team to initiate the next Phase

Contact : advisory@procumen.com

PROCUMEN : Commercial Wisdom. Digital Orchestration.
